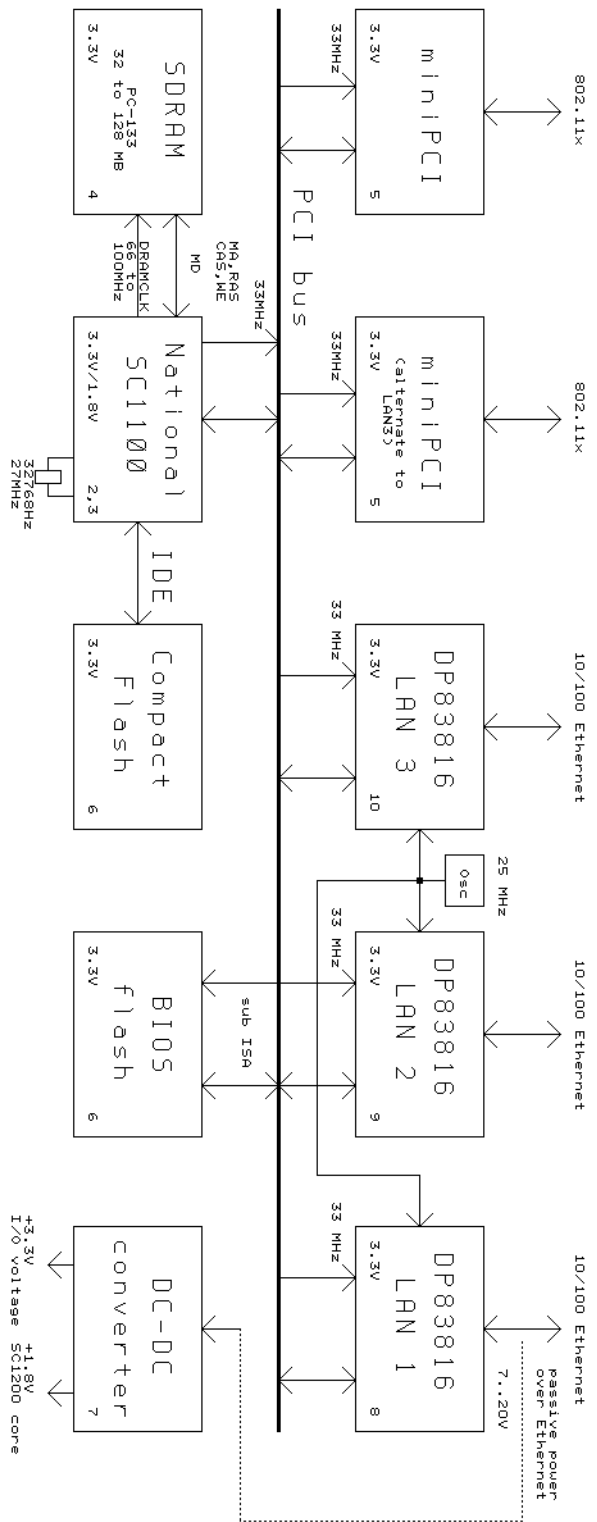


SC1100 wireless router platform

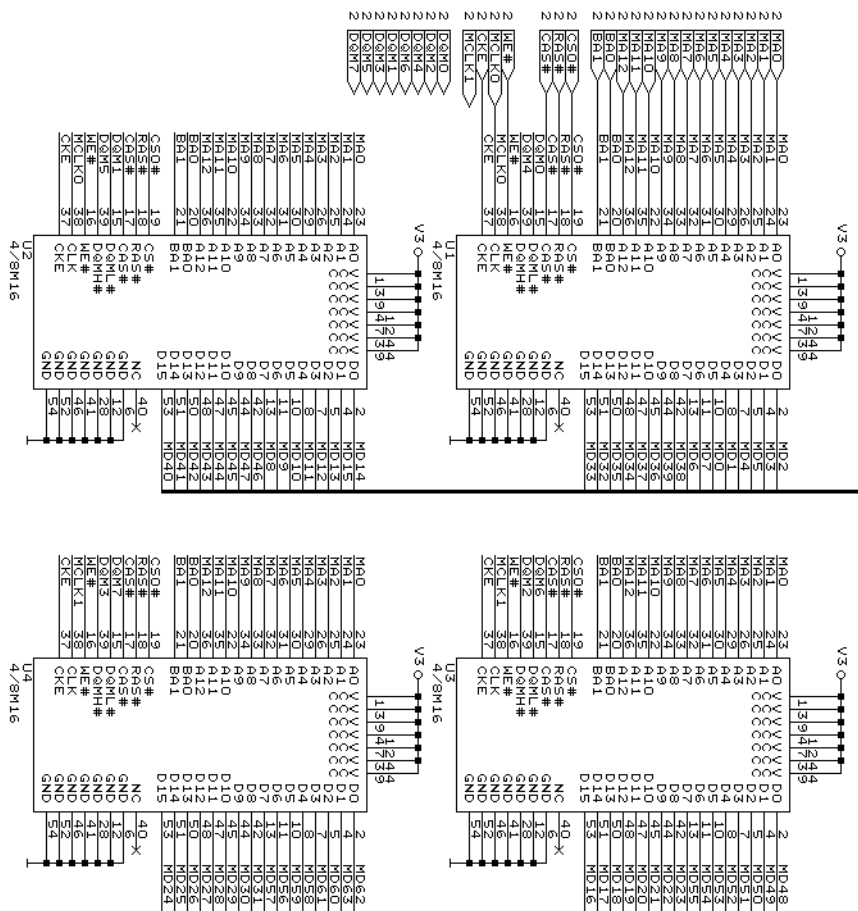


- 11.LINK
- 12.SCH
- 13.SCH
- 14.SCH
- 15.SCH
- 16.SCH
- 17.SCH
- 18.SCH
- 19.SCH
- 10.SCH

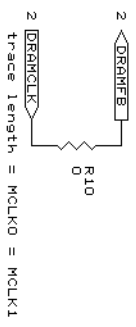
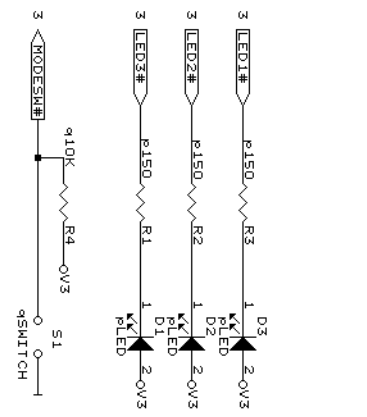
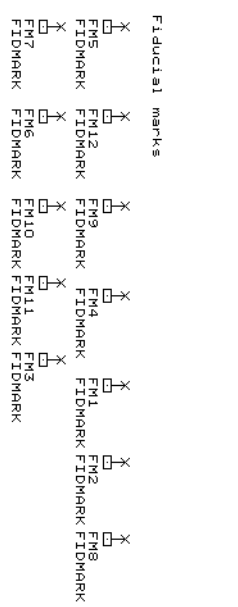
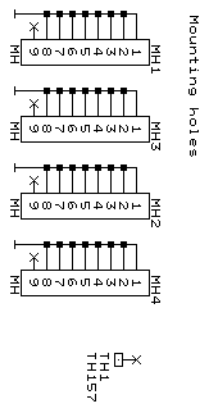
PC Engines GmbH	
CONFIDENTIAL	
Title Block Diagram	
Size Document Number	MRAP
Date:	August 4, 2003
Sheet	1 of 10
REV	1E

Option C = 4Mx16 DRAM (32MB)
 Option D = 8Mx16 DRAM (64MB)
 Option E = 16Mx16 DRAM (128MB)

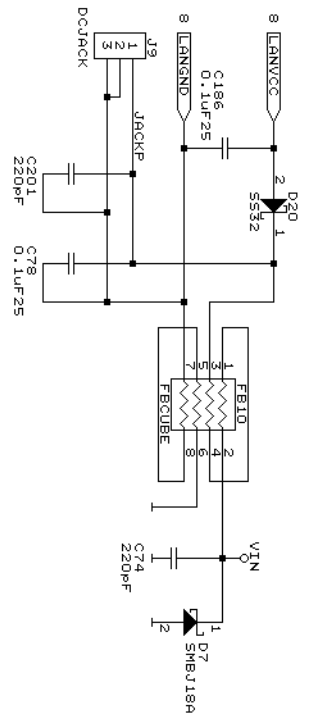
2 MCLK0..633



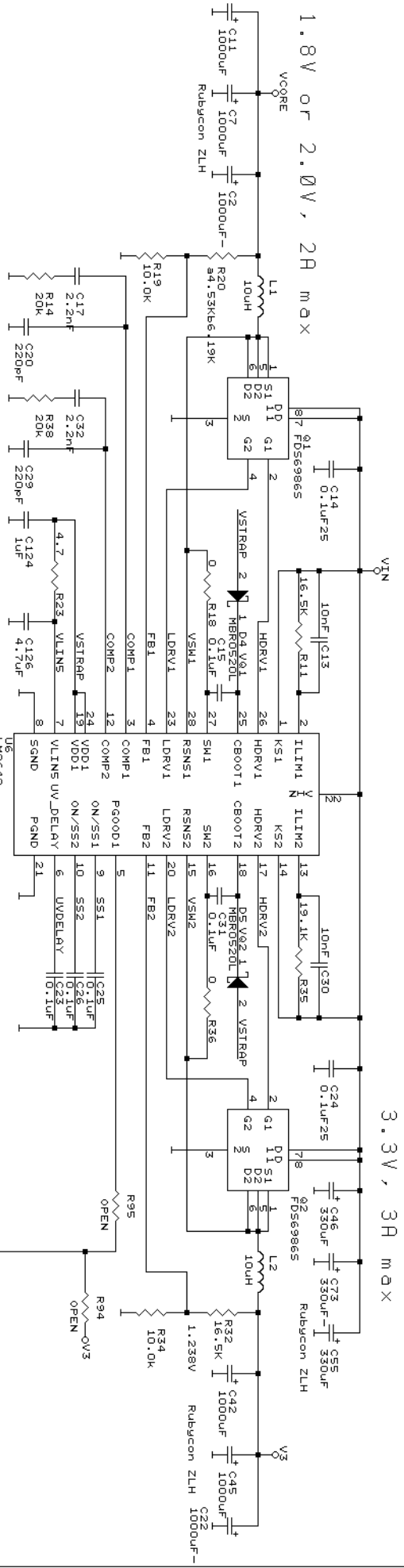
- Q95 Q97 Q1 Q98
- 0.1uF 0.1uF 0.1uF 0.1uF
- Q101 Q100 Q96 Q99
- 0.1uF 0.1uF 0.1uF 0.1uF
- Q6 Q102 Q4 Q5
- 0.1uF 0.1uF 0.1uF 0.1uF
- Q92 Q91 Q93 Q94
- 4.7uF 4.7uF 4.7uF 4.7uF



Power input
+7..20V

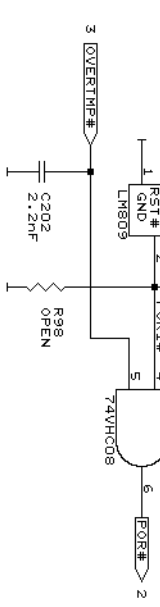
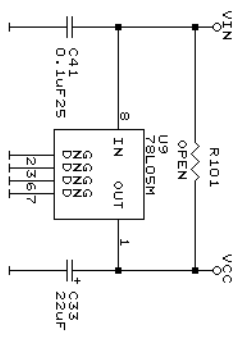


1.8V or 2.0V, 20 mA max



3.3V, 30 mA max

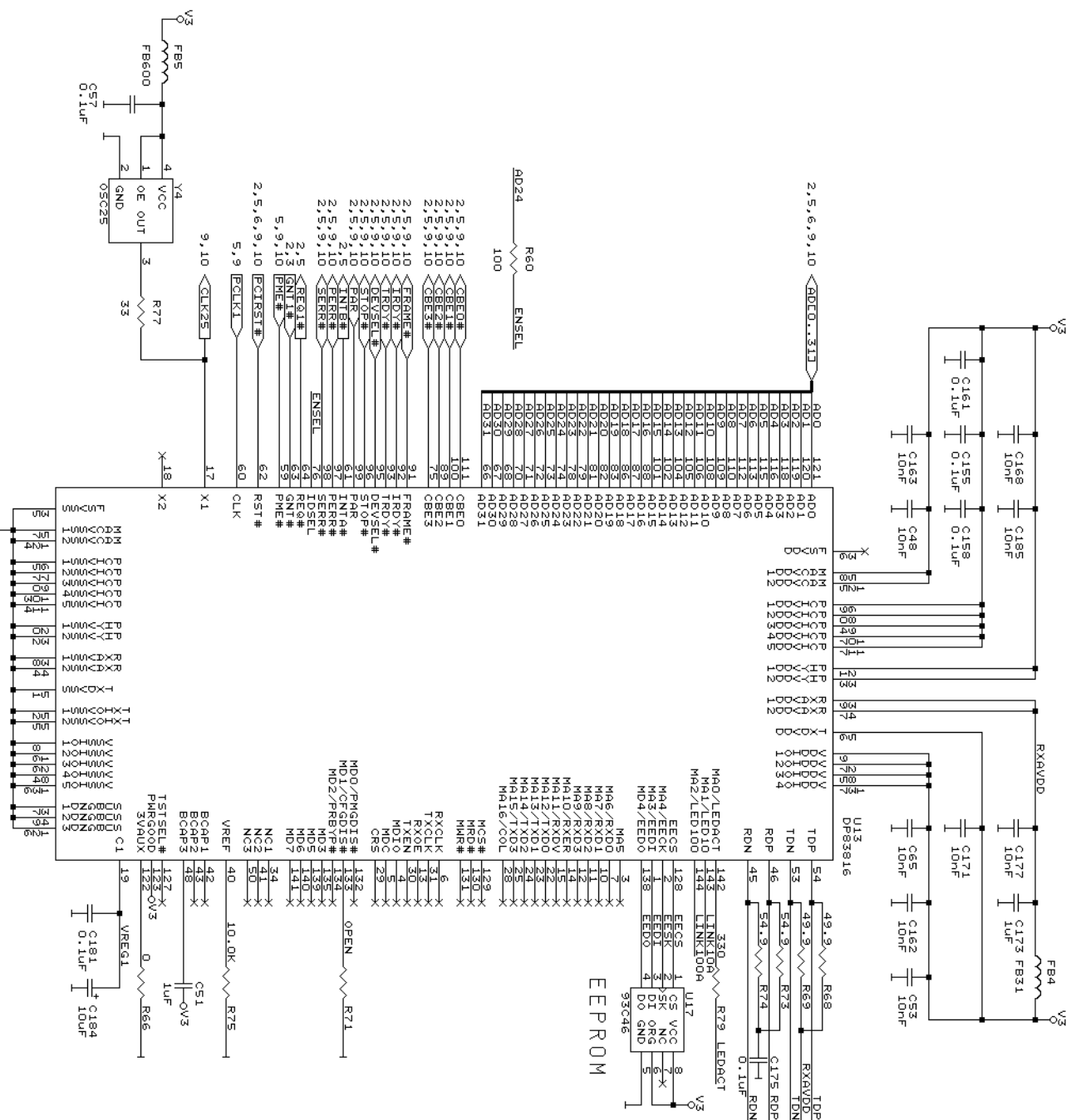
5V, 100 mA



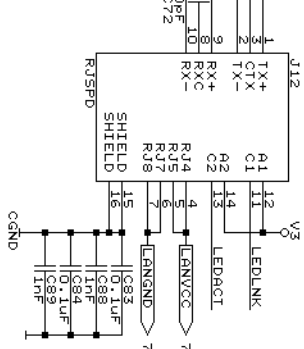
V3 3.3V discharge helps avoid reset problems

PC Engines GmbH	
CONFIDENTIAL	
Title Power supply	
Size	Document Number MRAP
Date	January 6, 2005 Sheet 7 of 10

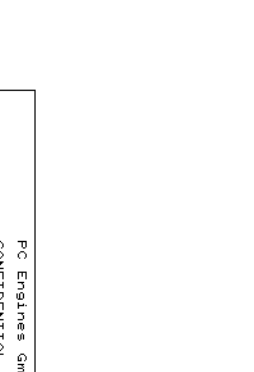
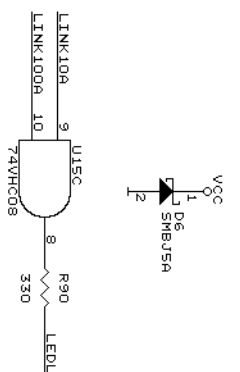
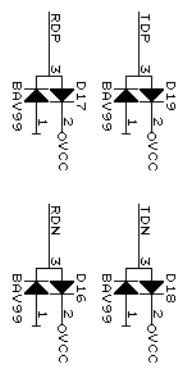
DP83816 10/100 Ethernet



magnetics + RJ45



ESD diodes



PC Engines GmbH	
CONFIDENTIAL	
Title	DP83816 Ethernet
Size/Document Number	MRAP
Date	November 27, 2003/Sheet 8 of 10
REV	1E

